
Compatibility

- Works with Galaxy smartphones running Android 8.0 or higher, with at least 2.0GB memory.
- Latest Galaxy software required for full functionality.
- Features may vary by device.
- Printed images may differ from the actual product.

In the Box

- Smart Tag • CR2032 Battery • Leaflet • Key Ring

Battery

- Battery life may vary based on usage and settings.

Important Information

- Full terms, warranty details, and opt-out information are available at: www.solum-group.com/smart-tag and in the enclosed materials.

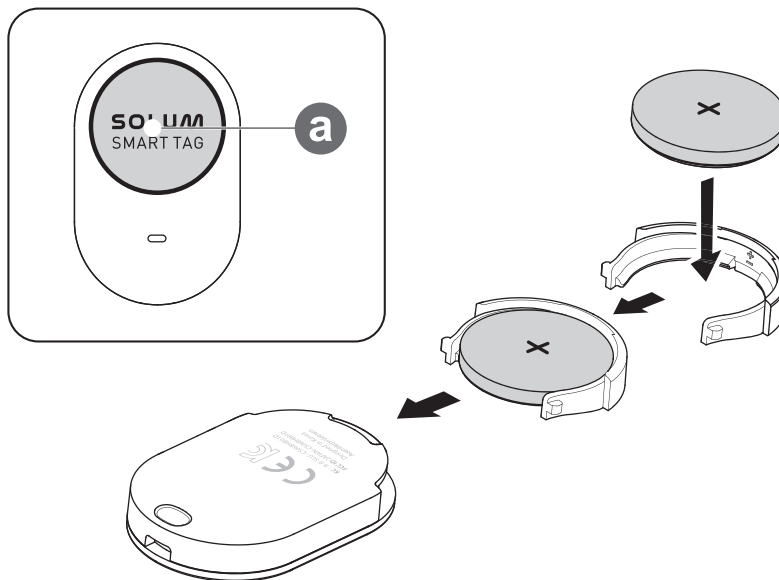
Bluetooth

- SOLUM CO., LTD. Bluetooth® is a registered trademark of Bluetooth SIG Inc. All other marks are property of their respective owners.

Sustainability

- Packaging is recyclable.
- Recycling facilities may not be available in all areas.

Works with Samsung SmartThings™



- To activate the product, press the button (a) to use and connect it to a mobile device, and then follow the instructions on screen to complete the connection.
- If there is no pop-up window, use your mobile device to scan the QR code on the box. (The code on the product represents the product number. Scan the QR code printed on the box)

 **Safety Precautions**

- Do not use the product in high-temperature areas or near open flames.
- Do not swallow or dismantle the battery. Doing so may cause chemical burns.
- Warning: Swallowing the battery can cause severe internal burns within two hours and may be fatal.
 - Keep the battery away from children and infants.
 - If the battery cover does not close properly, stop using the product and keep it out of reach of children and infants.
 - If a battery is swallowed or inserted into the body, seek immediate medical attention.

Correct Disposal



This marking on the product, accessories, or documentation indicates that electronic items (e.g., charger, headset, USB cable) must not be disposed of with household waste.



This marking on the battery, manual, or packaging indicates that batteries must not be disposed of with household waste.

Please follow local regulations for the safe disposal and recycling of electronic devices and batteries.

FCC Statement

This device complies with part 15 of the FCC Rules. Operation is subject to the following two conditions:


(1) This device may not cause harmful interference, and (2) this device must accept any interference received, including interference that may cause undesired operation.

NOTE: This equipment has been tested and found to comply with the limits for a Class B digital device, pursuant to Part 15 of the FCC Rules. These limits are designed to provide reasonable protection against harmful interference in a residential installation. This equipment generates, uses, and can radiate radio frequency energy and, if not installed and used in accordance with the instructions, may cause harmful interference to radio communications.

However, there is no guarantee that interference will not occur in a particular installation. If this equipment does cause harmful interference to radio or television reception - which can be determined by turning the equipment off and on - the user is encouraged to try to correct the interference by one or more of the following measures:

- Reorient or relocate the receiving antenna.
- Increase the separation between the equipment and receiver.
- Connect the equipment into an outlet on a circuit different from that to which the receiver is connected.
- Consult the dealer or an experienced radio/TV technician for help.

FCC Caution: Any changes or modifications not expressly approved by the party responsible for compliance could void the user's authority to operate this equipment.

 WARNING	
<p>INGESTION HAZARD: This product contains a button cell or coin battery. DEATH or serious injury can occur if ingested. A swallowed button cell or coin battery can cause Internal Chemical Burns in as little as 2 hours. KEEP new and used batteries OUT OF REACH of CHILDREN. Seek immediate medical attention if a battery is suspected to be swallowed or inserted inside any part of the body.</p>	